

Bento Dinner Plates

*for the **Post-Covid** World*

by MyGlassStudio



Message To Our Customers

Delight Your First Guests - Rejuvenate Travel

What we see

For 20 years we serve the food service industry. We have been here when the fine dining boomed, here when the Towers fell, here when the crash happened, here when the hospitality sector growth boom took place. Nothing compares...

Covid-19 is a catalyst for change especially within our industry. It disrupts the fundamental values of hospitality: “the friendly and generous reception and entertainment of guests and strangers”. In Greece, we call it “filoxenia” and it has a bit stronger meaning than the word hospitality: it means “the love for strangers”. It was such an important value, that the abuse of filoxenia was the starting point of the greatest war in ancient times: the Trojan War.

Today, disruption on a fundamental scale is happening. We cannot assemble and we do not trust strangers. Nevertheless, travel is in the human DNA. It has been there for millennia, it is stronger than the virus. As Homo Sapiens, we will adapt and survive.

Where we are

Despite the challenges that our clients face in many parts of the world, MyGlassStudio team is established in more or less Covid safe countries. The factory never ceased to operate. We have a vertical production and we do not depend on outsourcing. Our sales teams have been working remotely a long time before the crisis. In this sense, operationally the crisis found us prepared. Our loyal family of people is striving to excellence even during these unprecedented times and this is cherished by both of us. As a company, we are big enough to serve our clients and small enough to adapt to specific environments... and we listen, learn, un-learn and re-learn.

Where we are going

“Defeat Covid-19” is our new tagline underneath our logo, the Bull. It will stay there until this battle for the survival of the hospitality sector (that we so much love), is won. Our main weapon is **innovation and creativity**. As lockdowns ease, new opportunities arise to design solutions that deliver positive experiences. We work to help you “Delight your Guests” through the **sense of safety** and a **new creative optimism**. The catalog you are holding is not about a “hospital look” of perspex, masks and chlorine bleach. It is about designing a new travel and entertainment experience with products inspired by this new reality. New versions will be available as soon as we develop new products.

Hospitality always depended on **collaborations**. At MyGlassStudio, we listened to you, we experimented and we delivered. Although a small company, in many instances we have led the industry into new ventures. This is what we want to do now. We want to listen and deliver. We would love to hear from you, work with you and to support you exploring the Post-Covid-19 World. As Marriott International so lovingly puts it: “We will Travel Again.”

Stay Safe. Stay Healthy
Anna and Vasily

Bento Dinner Plates
Needed Now - Used Forever



Code: SC-18-10-SS02910450-PE. Medium Bento Basket

Bento Dinner Plates

A dinner set
in the form of a bento box

Four Basics

Covered Dinner Plates
Super-Hygienic Material
Versatility in Hotel Operations
Needed Now - Used Forever

One Idea

Reopen with Safety
Reopen in Style
Re-build Trust
Defeat Covid-19

Contactless Dining to Delight First Guests

Meal Guarded... Meal Enjoyed...

Just like the West taught the East how to serve food on a round open plate, the East can teach the West how to serve food in a box.

As opposed to the open dinner plate, the Bento Dinner Plate is a container that **guards food** and **provides protection** from infected air droplets that might linger in corridors and elevators.

It provides the **sense of safety** and **peace of mind** that post Covid restaurant guests **do** value without compromising the sense of luxury and extraordinariness, without disappointing them, without asking them to lower their expectations. It's about a "Stay Safe Look" not a "Hospital Look".

Delight your "first guests" through the sense of Safety and Creativity. They, in turn, will encourage those that are more Covid - anxious to return back to restaurants faster.

Product Specifications

Nonporous Surface - Glass is the Most Hygienic Tableware Material

Totally Stackable (Covers & Plates)

Dishwasher Safe

Heat-proof to 120°C

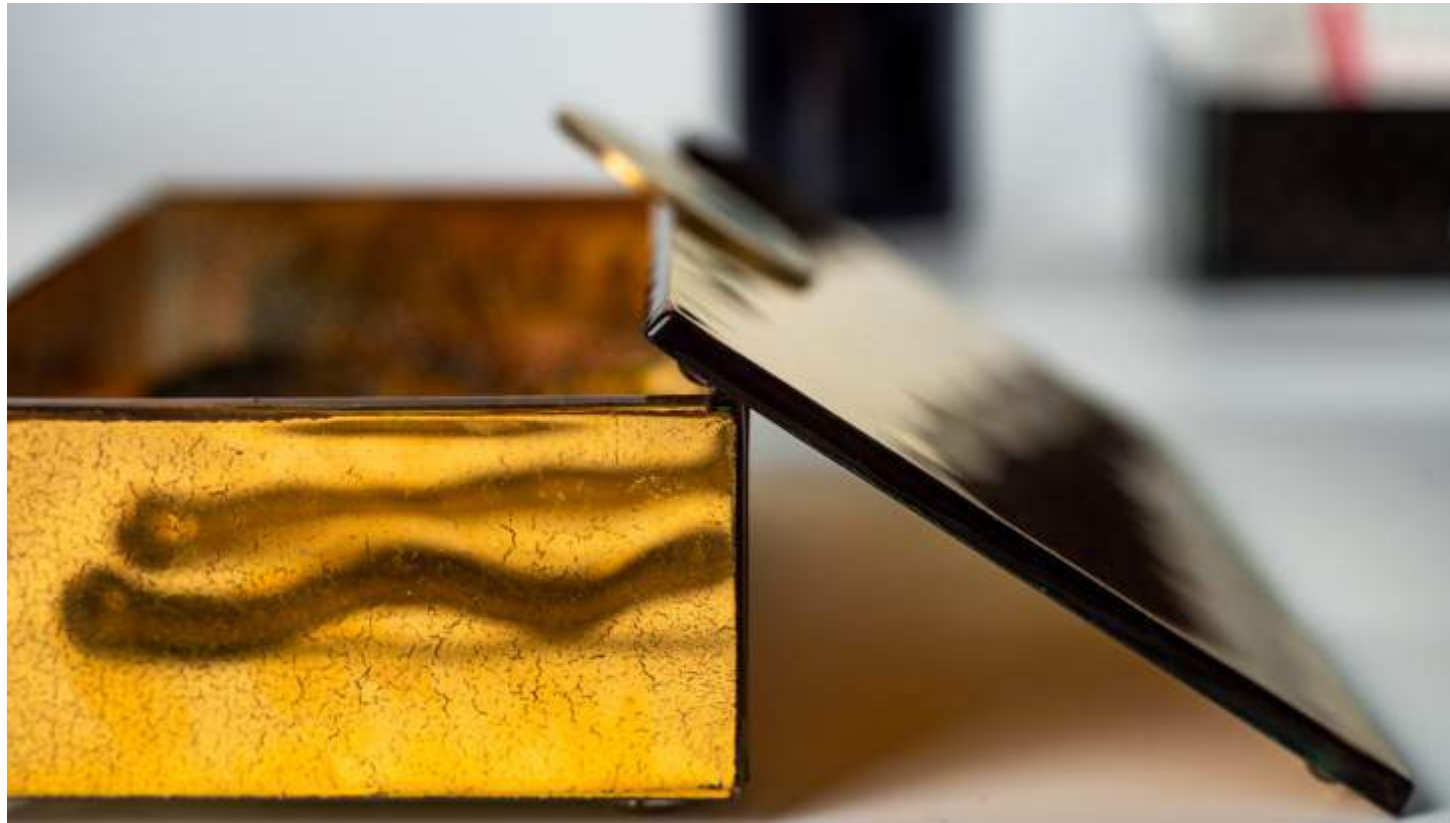
Ultra-Durable - Anti-Chipping Guarantee

The Only Wipe-able Dish in the Market!

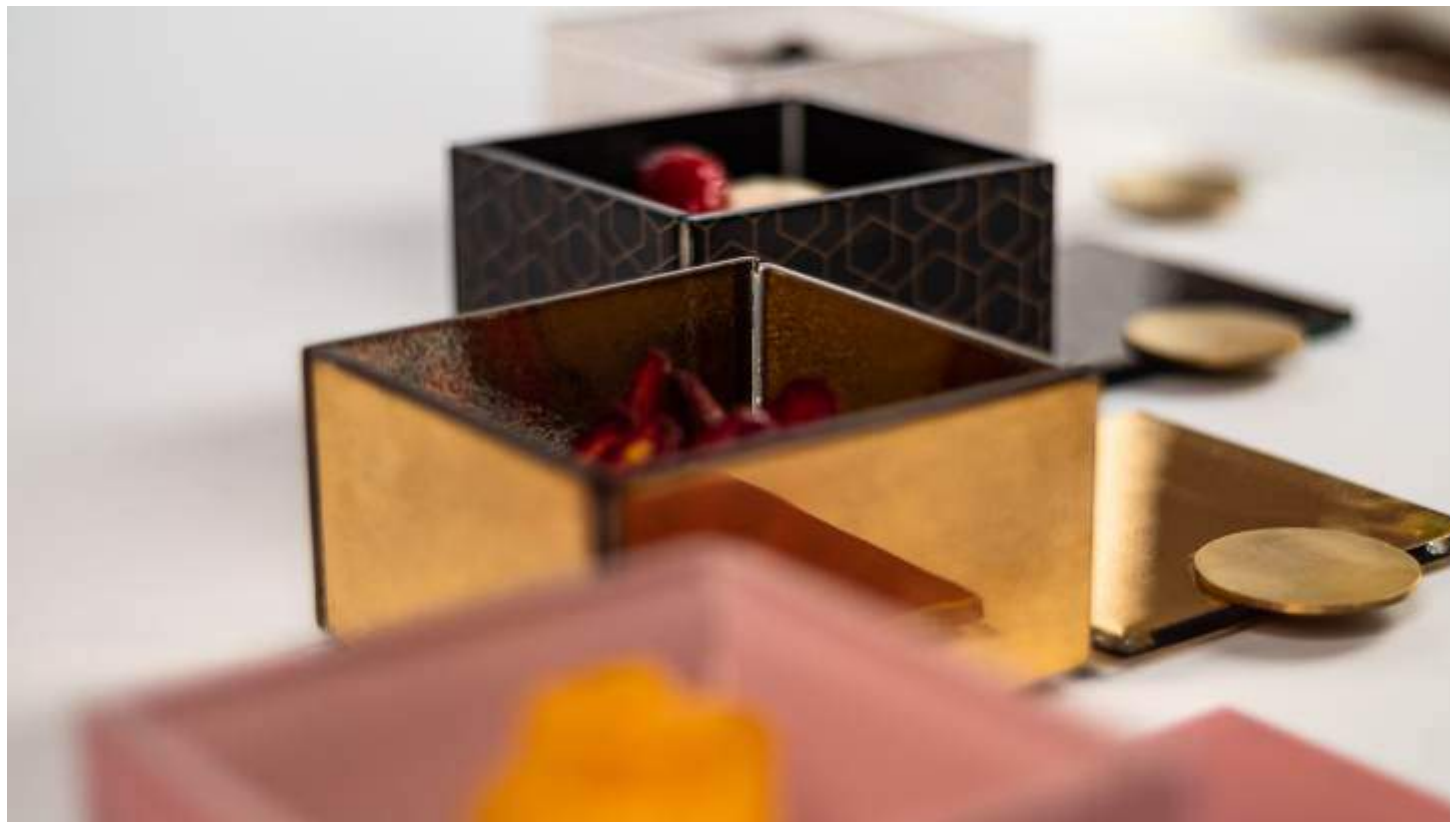
Code: S5-S6-04-SS3843. Small Rectangular Bento Dinner Plate, red inner side - black outer side



Is Your Food Service *Foodstagrammable*?



Code: S5-S6-04-SR21, Small Rectangular Bento Dinner Plate, Gold Plated



Code: S5-S6-03-SR21, Small Square Bento Dinner Plate in 4 colors

In-Room *Fine* Dining

IRD is our Chance to Re-build Trust. Do it *Fine*!
Have us Travel Again.

In contrast to disposable delivery packaging made of plastic or cardboard, the Bento Dinner Plate *infuses "Fine Dining" into "In-Room Dining"*. It will not disappoint guests who expect both Luxury and Safety, but get only Safety.

Compared to traditional room service metal covers which are associated with "old style" hospitality service, the Bento Dinner Plate is etiquette in 5-star quality infused with modern sensitivity. A truly modern "service under the bell" experience...

Since IRD will be the main F&B revenue driver of the hotels in the near future, *a WOW experience is absolutely essential*.

A Foodstagrammable "lunch box" presentation of In-Room Dining will surprise post-Covid age "Explorers". They will "See and Feel Safety". They will post it on Social. They will encourage others and will help boost travel.

The Bento Dinner Plate: A new canvas for new plating trends. A new vision of the covered dinner plate.

Knock & Drop Room Service Delivery
the Luxe Way

Bento Dinner Plates Main Features



Code: S5-S6-04-SS4220370, Small Rectangular Bento Dinner Plate, Pink with White Inner Side

www.myglasstudio.com

Hygienic-Chic Glass Bento Dinner Plates

In Food Service, the **Perception of Safety**, begins with the Material

Glass is absolutely non-porous. Its is not only easily sanitized, but it is also perceived by guests as “clean”. In general, it is the most hygienic material that can be used in food service. Materials with porous surfaces (such as wood, slate or unglazed ceramics), are hard or next to impossible to disinfect. MyGlassStudio bento dinner plates are also Chlorine Bleach resistant (EPA approved disinfectant) and it won't decolorize our glazes as it happens in low fired glazes.

Rough Ceramics such as earthenware or stoneware, have uneven and porous surfaces which are hard to deep clean and sanitize, especially unglazed or matte glazed ceramics.

Melamine, is not resistant to Chlorine Bleach disinfectants.

Lacquerware and wood are impossible to dishwash and are not resistant to Chlorine Bleach. Wood is also extremely porous.

Plastic or acrylic lunch boxes (such as Tupperware) are hygienic but plastic can hardly give a sense of luxury and elegance.

Porcelain, when chipped, it reveals the rough, unglazed clay body. Although inappropriate, it was common practice to use chipped dishes in food service. In the post-Covid world however, serving with chipped porcelain will be considered “Unsafe” by guests.

Shrink Wrap is good to protect food in room service... but not our Oceans.



Code: S5-S6-03-X40, Small Square Bento Dinner Plate

	Glass	Rough Ceramics *	Porcelain	Melamine **	Lacquerware	Plastics	Wood
Nonporous Surface (Porous surfaces are hard or impossible to disinfect)	yes	no	yes	no	yes	yes	no
Chlorine Bleach Resistant (EPA Approved Disinfectants)	yes	no	no (decolorizes glazes)	no	no	yes	no
Dishwasher Safe	yes	yes	yes	yes	no	yes	no
Eco Friendly	yes	yes	yes	no	yes	no	yes

* Earthenware/Stoneware (unglazed & matte glaze ceramics)

** Rustic Style Melamine

Back of the House Bento Dinner Plates

Specifications to Last Forever. Specifications for Standard Hotel Operation.

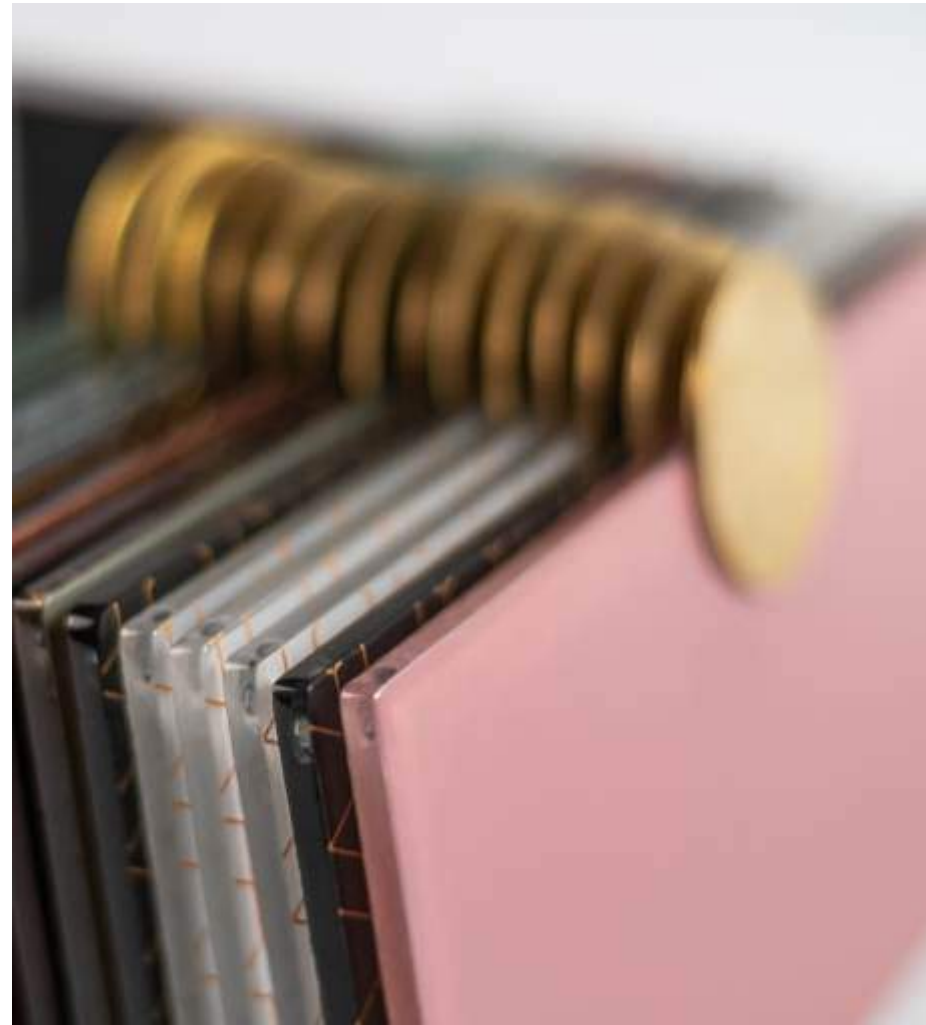
Kitchen storage of bento plates

You can stack bento plates without their covers, one on top of the other up to a height of 10-15 pieces and save space in storage.



Kitchen storage of bento covers

You can stack bento covers, one on top of the other up to a height of 30 pieces. You can also stack them sideways. Compared to glass domes or metal covers, bento covers are stored efficiently and in volume.



Food storage inside the bento plates

Bento plates optimize food storage. For instance, storing reception canapes in trays vs bento plates: you can store more canapes in the refrigerator, warmer or shelf in stacked bento plates than in trays. And they also perform as a pre-set meal!



Bumpers

Bumpers enable bentos to "lock" one on top of another when without cover. When with cover, bumpers lift the boxes above the handles enabling to stack closed boxes. Bumpers will prevent bento plates from sliding.



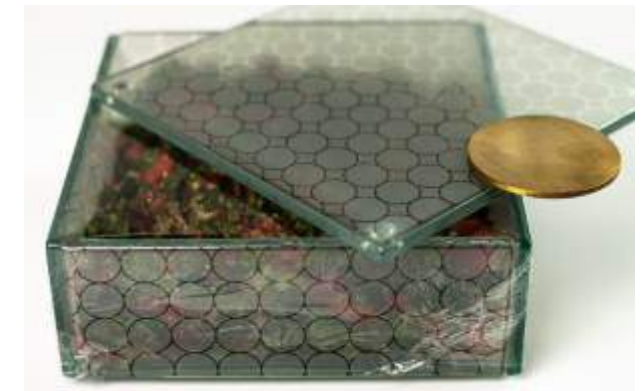
Food safe adhesive assembly

We use Food Grade adhesive in the assembly of our bento. It's the same material used in pacifiers for babies. It is non-toxic and environmentally friendly.



Cling film meals under cover & stack them

Keep food fresh in the refrigerator. Use the Bento Dinner Plate as meal prep without having to think about disarranging proper plating. Optimize your meal prep storage.



Back of the House Bento Dinner Plates

Specifications to Last Forever. Specifications for Standard Hotel Operation.

Ultra-Durable with Anti-Chipping Guarantee

All our products come with an anti-chipping guarantee and are extremely durable. If you are convinced that glass is a fragile material, please see our videos on our YouTube channel:

The hammer test: <https://youtu.be/WaJ8Pgdmxvg>

Anti chipping Guarantee: <https://youtu.be/OxPKzDfaFDc>

Stress Test: <https://youtu.be/7OnJXamyKQ4>

It's not the material, it's the quality of manufacturing that makes it durable. At MyGlassStudio, we do not cut corners in production to reduce costs and offer better prices. **As with all things in life, with glass you get what you pay for.**

Compared to porcelain, glass does not have a "body" and a "glaze". Glass and decor (color) are fused into **one single body** in our production facility.



Weight is Equal or Less to that of Ceramics

All our products are "light weight". Weight will not exceed the weight of a porcelain or ceramic plate of a similar shape or size.

See the video here: <https://youtu.be/z5Ztd6fHtRE>

Packaging is Tested with the 1m Drop Test

All products are packaged in 5 layer 25ECW1 quality paper masterpack. Inside the carton, products are separated by a double bubble wrap of 100gr.

<https://youtu.be/i52I52UOWZM>



Oven-Safe & Heat Retention

Bento plates can be heated to up to 120°C / 250°F for more than 8 hours. Furthermore, glass retains heat just like ceramics. It takes approximately 20 minutes for the temperature to drop from 100°C to 40°C.

See video here: <https://youtu.be/OTzjyIAZ8ME>

All products fit in the hot box.

All bento dinner plates are also freezer safe up to -20°C.



Dishwasher Safe & Chlorine Bleach Resistant

Bento plates are dishwasher safe to up to 90°C / 190°F.

Furthermore, colors will not decolorize with chlorine bleach baths as it happens with lacquerware, melamine or low fired glazes in ceramics.



Resistant to Cutlery - Toughened Glass Surface

Colors are fused with the glass body and cannot be inscribed from cutlery (including stainless steel) with carbon up to 52% on the Rockwell Hardness scale.

Leak Proof

Bento plates are leak proof and you can serve soup.



Colors Will Never Peel Off

We fire colors in high temperatures. Therefore, colors will fuse INTO the glass body and will not be a separate layer "on top" of the glass body.

Colors are microwave safe with the exception of Gold and Silver which are pure gold and silver. Colors are dishwasher resistant.

Non Toxic - Lead & Cadmium Free Colors

Colors do not contain toxic ingredients such as Lead or Cadmium (we pass California and Japan regulations for tableware that come in contact with food).



Citric Acid Resistant Colors

Bento plates are citric acid resistant to food ingredients that contain up to 4% citric acid such as vinegar, passion fruit, lemon etc.

The Bento Dinner Plate Collection



Chefs Cook as Usual & Plate with Creativity

Guests Perceive Safety & Dine in Style

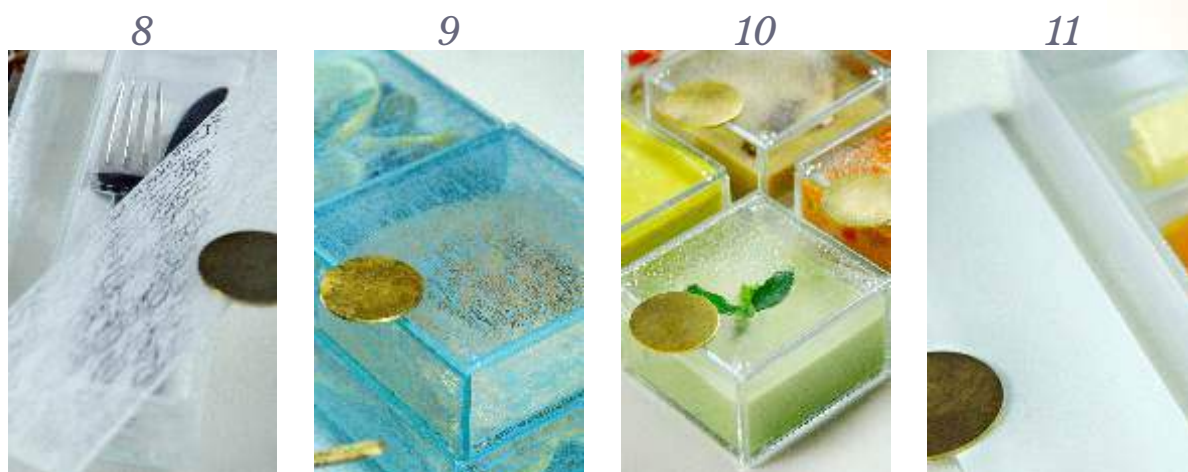
The Color Collection

11 Colors to Mix & Match

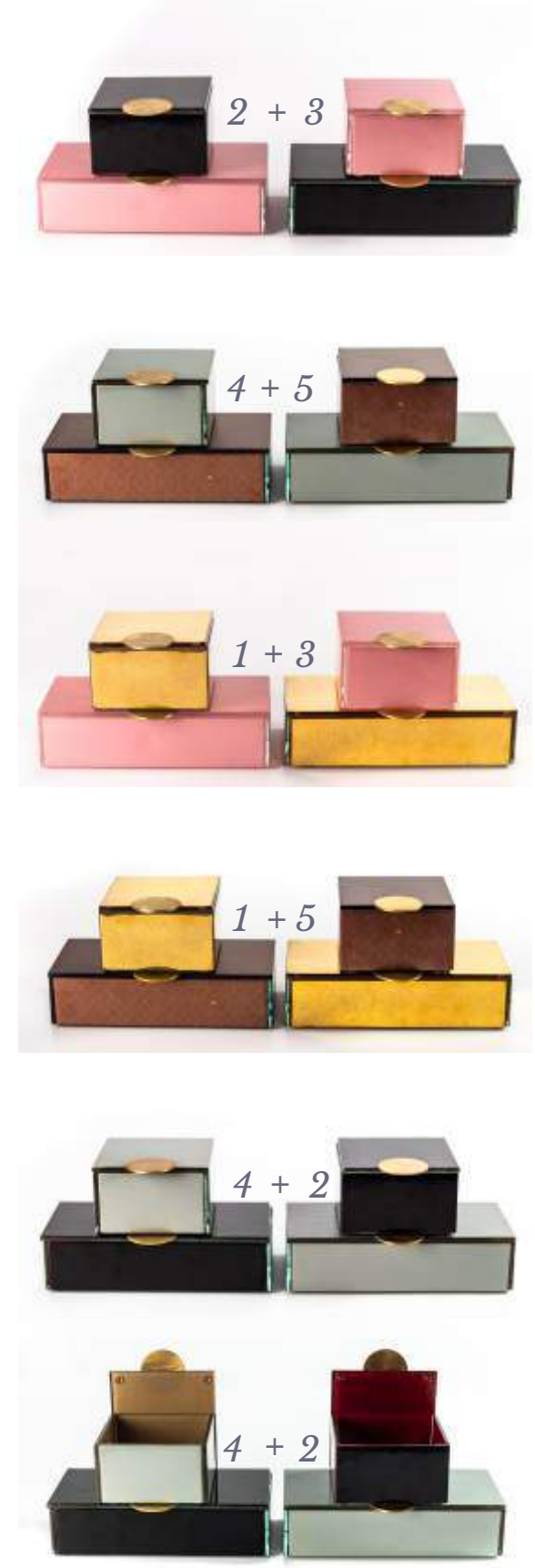
1. Precious Liquid Gold, (Code: SR21)
2. Liquorice Black (with Chinese Red inner side), (Code: SS3843)
3. Metallic Dark Salmon Pink (with white inner side), (Code: SS4220370)
4. Metallic Artichoke Gray (with dusty gold inner side), (Code: SS02910450)
5. Metallic Tobacco Brown with gold Art Deco Pattern, (Code: DMZ026021)
6. White with gold Art Deco Pattern, (Code: RHZ422021)
7. Black with gold Art Deco Pattern, (Code: RHZ43021)



8. White Crackling Pattern, (Code: CR422)
9. Niagara Blue Crackling Pattern, (Code: CR123)
10. Clear Transparent, (Code: X40)
11. Pure Milk White, (Code: SR422)



Covers, with solid brass handle



Colors of the Year 2021

Trends 2021 by MyGlassStudio

This addition to our bento dinner plate collection is one of the first dinnerware product launches with the Pantone colors 2021. The Bento Dinner Plate was redesigned for an aspirational and rock-solid New Year. Email us at info@myglasstudio.com

Illuminating Yellow

Ultimate Gray



Is the Bento Dinner Plate Customizable?

Case Study: Amanpulo

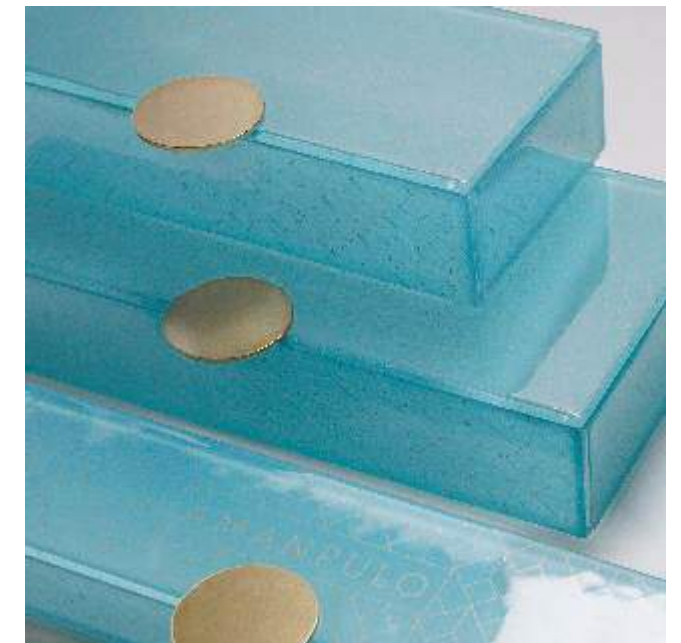
MyGlassStudio is the leader in the bespoke tableware category. We design “Only and Exactly what You Need”.

This motto is no different in the Bento Dinner Plate Collection. You can select from among 200 colors, as well as from a variety of patterns and we can deliver a customized product based on **only and exactly what you need**.

This is the case of Amanpulo where we worked with this high end tropical resort. The collection we designed in collaboration with the customer, reflects the essence of the property.

At the same time the property can be proud that these products are made only and exclusively for them.

This is the **Luxe way!**



Code: S5-S6-01 - DMZ113021, Large Square Bento Dinner Plate with Amanpulo logo and handpicked colors

The 5 Bento Dinner Plates

Tiered or Stacked in 2 Pairs

Small Pair



Small Square Plate with Cover

Dimensions: 11x11cm/4.3x4.3in
Height: 6.5cm/2.6in
Capacity: 550ml/18.6oz
Weight: 610gr/1.3lbs
Code: S5-S6-03



Small Rectangular Plate with Cover

Dimensions: 22x11cm/8.7x4.3in
Height: 5.5cm/2.2in
Capacity: 945ml/32oz
Weight: 980gr/2.2lbs
Code: S5-S6-04

Large Pair



Large Square Plate with Cover

Dimensions: 14x14cm/5.5x5.5in
Height: 5.5cm/2.2in
Capacity: 770ml/26oz
Weight: 810gr/1.8lbs
Code: S5-S6-01



Large Rectangular Plate with Cover

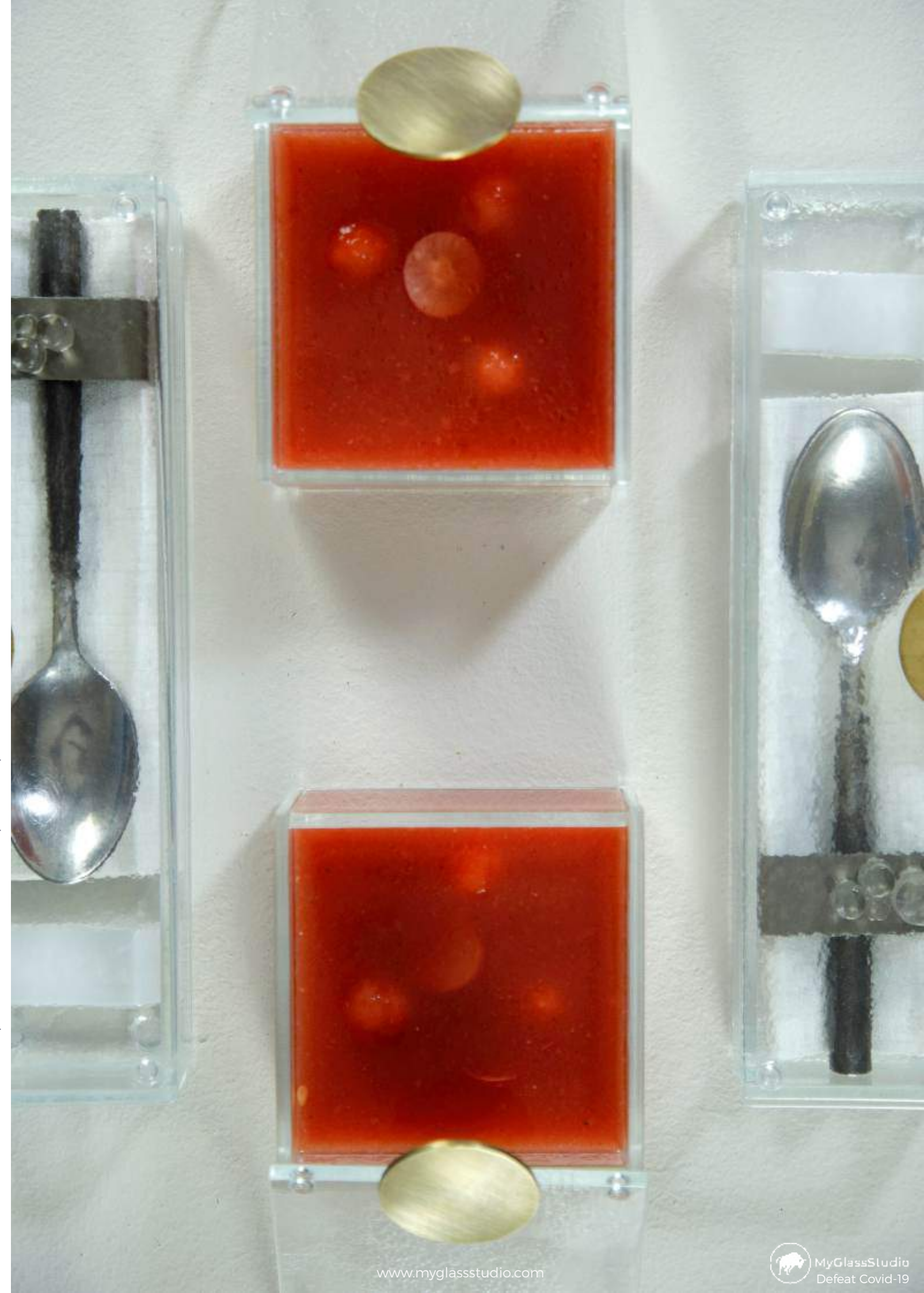
Dimensions: 28x14cm/11x5.5in
Height: 6cm/2.4in
Capacity: 1.750ml/59.2oz
Weight: 1480gr/3.3lbs
Code: S5-S6-02



Long Rectangle Plate with Cover

Dimensions: 28x7cm/11x2.8in
Height: 4cm/1.6in
Capacity: 480ml/16.2oz
Weight: 760gr/1.7lbs
Code: SC-17-16

Code: S5-S6-03-X40, Small Square Bento Dinner Plate, Gazpacho soup



The *Bento* Dinner Plate Collection

A New Canvas for New Plating Trends



Small square plate 11x11cm
Miso Soup



Square basket
High tea presentation



Small rectangular plate 22x11cm
Salmon trout fillet with strawberries



Square basket
Nigiri set in 3 tiers



Large rectangular plate 28x14cm
Indian Biryani



Small square plate 11x11cm
Miso Soup and a portion of rice



Large square plate 14x14cm
Ravioli with frog legs and Einkorn risotto



Large rectangular plate 28x14cm
Caviar presentation



Small rectangular plate 22x11cm
Sea bass fillet with rice



Large square plate 14x14cm
Appetizer shrimp with corn sauce



Long rectangle appetizer plate 28x7cm
Octopus with baby vegetables



Small rectangular plate 22x11cm
Yogurt cake with almond marzipan



Small rectangular plate 22x11cm
Spaghetti allo scoglio



Large rectangular plate 28x14cm
Mediterranean mussels



Small square plate 11x11cm
Asparagus soup

The *Bento* Dinner Plate Collection

Small Pair

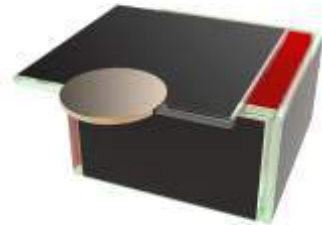
Small Square Plate / Soup Bowl

11x11cm / 4.3x4.3in, Height: 6,5cm / 2.5in, Capacity: 550ml / 18.6oz

The small square plate is perfect to serve soups, side dishes such as market vegetables, side green salad, mashed potatoes and classic french fries. Due to its depth, you can present a bread bun to accompany a salad or a soup. The small square plate is also ideal for serving desserts such as brownies, cookies, selection of ice cream or seasonal fruits. You can stack two square bentos next to each other on top of the rectangular one. In this way, you can present stir fried vegetables in the large one and have the rice and salad in the small square ones. For the bar lounge, it is great for snacks.



S5-S6-03-SS4220370



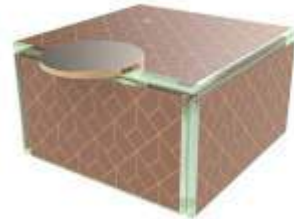
S5-S6-03-SS3843



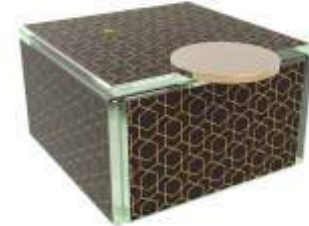
S5-S6-03-SS02910450



S5-S6-03-RHZ422021



S5-S6-03-DMZ026021



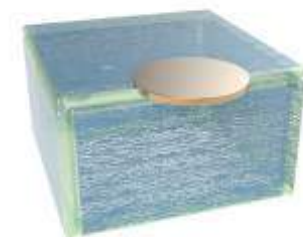
S5-S6-03-RHZ43021



S5-S6-03-CR422



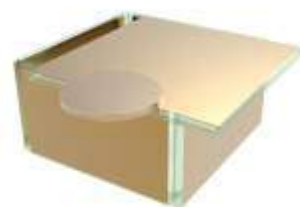
S5-S6-03-X40



S5-S6-03-CR123



S5-S6-03-SR422



S5-S6-03-SR21

Small Rectangular Plate

22x11cm / 8.7x4.3in, Height: 5,5cm / 2.7in, Capacity: 945ml / 32oz

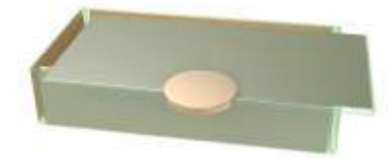
The perfect size for a pasta portion, small club sandwich, veggie wraps or Pad Thai. Serve cavatelli or spaghetti and enclose the meal in a protected box that will be delivered to your guest "touchless". Your guests will for sure appreciate the innovation! The small rectangular bento dinner plate is ideal for breakfast served in the room: tier two boxes (one with pancakes and one with eggs with bacon). You have it: a bento box that is a joy to use and encourages an order of consumption. In bars and lounges this is the perfect large appetizer plate to serve tempura and finger food in general. With its cover it also very useful as a lunch box for meeting rooms and board rooms for a light lunch.



S5-S6-04-SS4220370



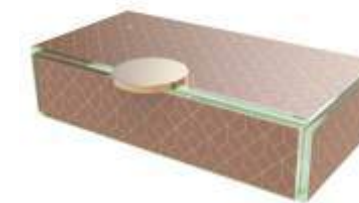
S5-S6-04-SS3843



S5-S6-04-SS02910450



S5-S6-04-RHZ422021



S5-S6-04-DMZ026021



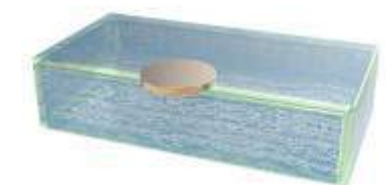
S5-S6-04-RHZ43021



S5-S6-04-CR422



S5-S6-04-X40



S5-S6-04-CR123



S5-S6-04-SR422



S5-S6-04-SR21

The *Bento* Dinner Plate Collection

Large Pair

Large Square Plate

14x14cm / 5.5x5.5in, Height: 5,5cm / 2.2in, Capacity: 770ml / 26oz

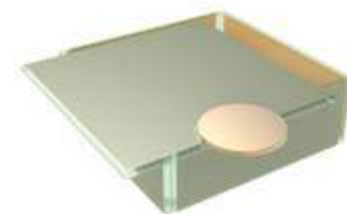
The Bento Appetizer or Dessert Plate can be used to serve small salads, risotto, starters, desserts, soups (seasonal vegetable minestrone), sides (a portion of french fries) and other appetizers such as arancini or spring rolls in a plate that will protect the meal, without compromising on the eating experience! Actually it enhances it! As a welcome amenity, surprise your guests with a delicious food amenity, guarded inside the cover (can also use shrink wrap under the cover). It is also the perfect size for kids' meals such as pasta or fish fingers.



S5-S6-01-SS4220370



S5-S6-01-SS3843



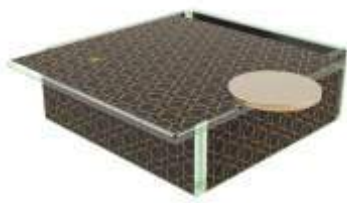
S5-S6-01-SS02910450



S5-S6-01-RHZ422021



S5-S6-01-DMZ026021



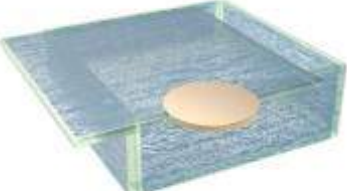
S5-S6-01-RHZ43021



S5-S6-01-CR422



S5-S6-01-X40



S5-S6-01-CR123



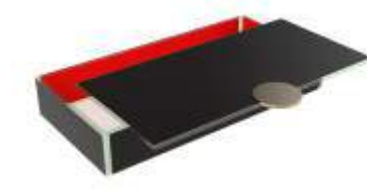
S5-S6-01-SR422



S5-S6-01-SR21



S5-S6-02-SS4220370



S5-S6-02-SS3843



S5-S6-02-SS02910450



S5-S6-02-RHZ422021



S5-S6-02-DMZ026021



S5-S6-02-RHZ43021



S5-S6-02-CR422



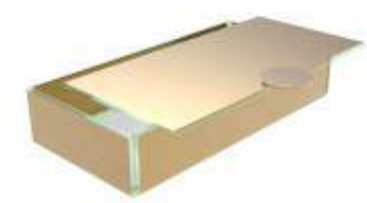
S5-S6-02-X40



S5-S6-02-CR123



S5-S6-02-SR422



S5-S6-02-SR21

The *Bento* Dinner Plate Collection

Large Pair

Long Rectangle Appetizer Plate / Cutlery Case / Dip Bowl Set / Canape Tray
28x7cm / 11x2.8in, Height: 4cm / 1.6in, Capacity: 480ml / 16.2oz

This versatile appetizer plate is great for small food bites and long appetizers such as an octopus dish, spring rolls or side greens and can be stacked on top of the large rectangular bento main course plate. This plate is also useful as a cutlery case and a dipping bowl tray.

As a cutlery case, it is a unique decorative object for the table setting, but at the same time it provides the perception of "cleanliness and sanitation" as well as the sense of a "personal" rather than a communal cutlery set. Operationally, restaurants can reduce costs since cutlery case presets can be ready in the service station and tables can be turned faster. Finally, it is great as a passing or canape tray for canapes in Cocktail parties and Receptions.

Code: SC-17-16



SC-17-16-SS4220370



SC-17-16-SS3843



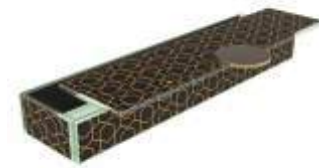
SC-17-16-SS02910450



SC-17-16-RHZ422021



SC-17-16-DMZ026021



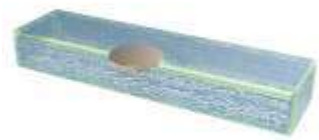
SC-17-16-RHZ43021



SC-17-16-CR422



SC-17-16-X40



SC-17-16-CR123



SC-17-16-SR422



SC-17-16-SR21



The *Super Hero* of the Collection

The Long Rectangle with its Multiple Uses & Various Accessories

Appetizer Plate



Code: SC-17-16-SS3843

Cutlery Case



Code: SC-17-16-SS3843, Assorted with Napkin ring and cutlery rests

Dip Bowl Set



Code: SC-17-16-RHZ43021, Assorted with square dipping bowls and individual condiment spoons

Canape Tray



Code: SC-17-16-DMZ026021, Assorted with wine glass holder

Tabletop Accessories

Napkin Ring | Cutlery / Chopstick Rests | Dip Bowl Set | Salt & Pepper Holder

Cutlery case is the long rectangle bento dinner plate in which a variety of accessories can be added. You can transform it into a condiment tray/dip bowl set or a cutlery case.

To create the dip bowl set, place 4 mini square dipping bowls with their individual condiment spoons.

To create a cutlery case, place the salt & pepper holder at one end together with the cutlery rests. Use the napkin ring to envelope the silverware set, the napkin and the salt spoon. The guest can then place a fork and the knife on the table resting on the cutlery rests.



Color: DMZ026021



Color: X40



Color: SR21



Color: SS3843



Color: SS4220370



Color: RHZ43021



Tabletop Accessories

Napkin Ring and Cutlery / Chopstick Rests

Napkin Ring

6x2,5cm / 2,4x1in, Height: 3.1cm / 1.2in

A napkin ring with 2 round handmade glass beads and metal ring. Envelope napkin, cutlery set or chopsticks as well as the salt tasting spoon and offer them together inside the cutlery case.
Code: SC-00-10



SC-00-10-X40-BK
Black



SC-00-10-X40-W
White



SC-00-10-X40-G
Gold

Cutlery / Chopstick Rests

6x2,6cm / 2,4x1in, Height: 1 cm/0.4in

A chopstick or cutlery rest for fine dining table setting. It can be placed inside the cutlery case along with the napkin ring, cutlery set and napkin. Guests can place them on the table on their own together with flatware.
Code: SC-17-13



SC-17-13-SR43
Black



SC-17-13-SR026
Brown



SC-17-13-SR0450
Gray



SC-17-13-SR422
Pure White



SC-17-13-X40
Transparent



SC-17-13-SR21
Precious Gold

Color: DMZ026021

Tabletop Accessories

Condiment Bowls with Condiment Spoons

Condiment / Dipping Bowls

6x6cm / 2,4x2,4in, Height: 2cm/0.8in, Capacity: 30ml/1 oz

You can place 4 mini square (or round) condiment bowls along with their individual condiment spoons inside the long rectangle bento dinner plate; transforming it into a dipping bowl set.

Code: B5-S4-04



B5-S4-04-SR43



B5-S4-04-SR026



B5-S4-04-SR0450



B5-S4-04-SR422



B5-S4-04-X40



B5-S4-04-SR21



SC-01-13-BL
Black



SC-01-13-BG
Old Bronze



SC-01-13-GS
Gold



SC-01-13-CP
Copper



SC-01-13-SS
Silver

Salt & Pepper Holder with Salt Spoon

6x3cm / 2,3x1.2in, Height: 1.8cm / 0.7in, Capacity: 10ml / 0.3oz

The salt & pepper holder comes with a salt spoon and can be placed inside the long rectangle bento dinner plate. You might also want to add a napkin ring and a pair of cutlery rests, thus creating a proper personal cutlery case.

Code: SC-04-07



SC-04-07-SR422-SS



SC-04-07-SR43-BL



SC-04-07-SR026-BG



SC-04-07-SR21-GS



SC-04-07-X40-SS



www.myglasstudio.com

Color: SS02910450



Tabletop Accessories

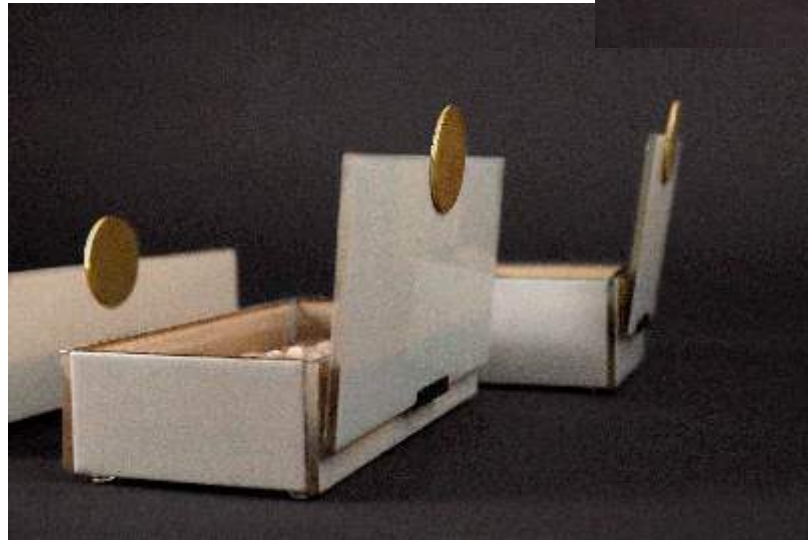
Bento Dinner Plates Cover Holders

Dimensions: 4.5x1.6cm/1.8x0.6inch, Weight: 21gr/0.05lbs

Use the cover holder to safely place and hold the lid of the bento dinner plates for a lux and safe presentation. It comes in a set of 6pcs. Code: SC-18-13



SC-18-13-BK



Color: SS02910450



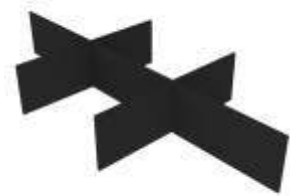
Tabletop Accessories

Bento Plate Dividers

Large Divider

Dimensions: 27x13x4cm/11x5x1.6inch, Weight: 340gr/0.7lbs

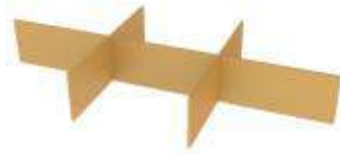
Bento box divider for the large rectangular bento dinner plate (S5-S6-02) to divide the plate in 6 parts. Turn the large rectangular bento dinner plate into a Japanese bento box using the inox metal divider. It can also be used for spa or room amenities for chocolates or petit fours and at the bar for canapes and finger food. Code: RP-90-46



RP-90-46-BK



RP-90-46-W



RP-90-46-G

Small Divider

Dimensions: 12.5x6.5x4cm/5x2.3x1.6inch, Weight: 120gr/0.3lbs

Bento box small divider for the large rectangular bento dinner plate (S5-S6-02), to divide the plate in 3 parts, a larger area and two small areas. Can also be used with the large square bento plate (S5-S6-01), to either divide the plate in 3 parts or in 4 parts by using 2 dividers back-to-back. Code: RP-90-48



RP-90-48-BK



RP-90-48-W



RP-90-48-G



Code: RP-90-48-BK

Code: RP-90-46-W



Tabletop Accessories

Tabletop Sanitizing Caddies

Wipes and Sanitizer Tabletop Caddy

Dimensions: 22x11cm/8.7x4.3, height: 20.5cm/8inch, Capacity: 945ml/32oz

Use products from our regular collection in different combinations to present your customer with tabletop caddies for sanitizing purposes. Here you can see a combination of the Small Rectangular (RP-08-38) with the metal handle of the Medium Basket (RP-90-45).



Square Covid-19 Safety Kit with Cover

Dimensions: 14x14cm/5.5x5.5, height: 6.8cm/2.6inch, Capacity: 770ml/26oz

Use products from our regular collection in different combinations to present your customer with tabletop caddies for sanitizing purposes. Here you can see a combination of the Small Square Bento Dinner Plate (S5-S6-01).



SC-18-11-SS4220370-W



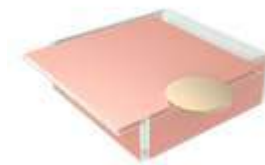
SC-18-11-SS3843-BK



SC-18-11-SS02910450-PE



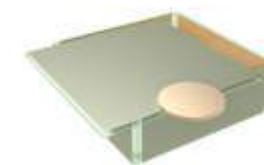
SC-18-11-SR422-W



S5-S6-01-SS4220370



S5-S6-01-SS3843



S5-S6-01-SS02910450



S5-S6-01-SR422



SC-18-11-RHZ422021-G



SC-18-11-DMZ026021-G



SC-18-11-RHZ43021-BK



SC-18-11-SR21-G



S5-S6-01-RHZ422021



S5-S6-01-DMZ026021



S5-S6-01-RHZ43021



S5-S6-01-SR21



SC-18-11-CR422-W



SC-18-11-X40-PE



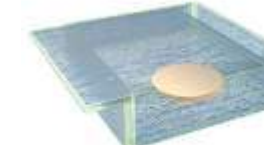
SC-18-11-CR123-PE



S5-S6-01-CR422



S5-S6-01-X40



S5-S6-01-CR123

Tabletop Accessories

Large Cutlery Case for 2 cutlery sets, Tabletop Caddy

Large Tabletop Caddy, Cutlery Case for 2 or 4 sets

Dimensions: 28x14cm/11x5.5, height: 20cm/8inch, Capacity: 1750ml/59oz

Use the Large Rectangular with the cover (S5-S6-02) and the metal handle of the Large Basket (RP-90-44).



Code: S5-S6-02-DMZ43021

Large Rectangular Bento Dinner Plate used as a cutlery case for multiple cutlery sets..without the handle



SC-18-12-SS4220370-W



SC-18-12-SS3843-BK



SC-18-12-SS02910450-PE



SC-18-12-SR422-W



SC-18-12-RHZ422021-G



SC-18-12-DMZ026021-G



SC-18-12-RHZ43021-BK



SC-18-12-SR21-G



SC-18-12-CR422-W



SC-18-12-X40-PE



SC-18-12-CR123-PE



Bento Dinner Plates A Solution for Every Outlet

A Gift Box. From Chef.. to Guest.

5 Dinner Plates - *Solution for Every Outlet*

Reduce costs by using same item for multiple outlets

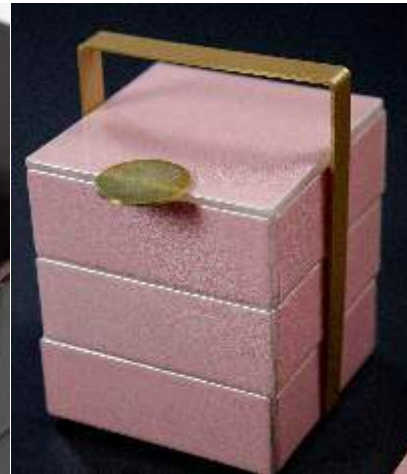
The Bento Dinner Plate
Bento dinner plates used individually with their cover



Tiered Display
Multiple bento dinner plates used in tiers



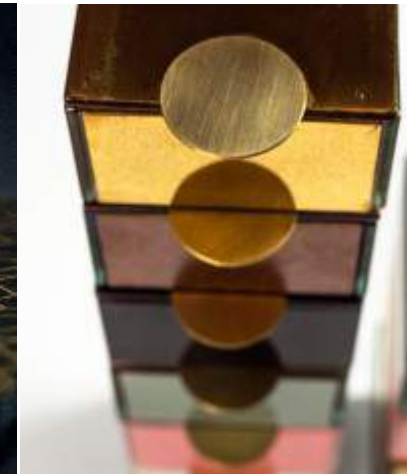
Bento Baskets
3 sizes of baskets used together with bento plates



The Service Tray
A tray to accommodate any combination of bento plates



Luxury Lunchbox
Bento plates stacked one on top of another with preset meals



Bento Server
A small display for bento dinner plates



Hotel Outlets

Restaurants	yes			yes		
Sit-Down Banquets	yes			yes		
Coffee Breaks-Small Events			yes		yes	yes
Receptions	yes			yes (used as serving tray)		
Boardroom Lunch Breaks	yes			yes	yes	
In Room Dining		yes	yes	yes		
Lobby / Tea Lounge		yes	yes			
Bar Food	yes	yes	yes			
Executive Club Lounge					yes	yes

Tier Display



Tier Display - Stacking Options

- Bento dinner plates “lock” one on top of the other. Top tier will not slide off with normal service handling.
- Covering the tiered display is possible with both the individual covers or with the large cover of the pair.
- Bento dinner plates can be tied between pairs.

Small Pair



2 Tiers
2 Rectangular
1 Rectangular cover



3 Tiers
3 Rectangular
1 Rectangular cover



2 Tiers
1 Rectangular
2 Square
2 Square covers

2 Tiers
1 Rectangular
2 Square
1 Rectangular cover

3 Tiers
2 Rectangular
2 Square
2 Square covers

3 Tiers
2 Rectangular
2 Square
1 Rectangular cover

Large Pair



2 Tiers
2 Rectangular
1 Rectangular cover



2 Tiers
1 Rectangular
2 Square
1 Rectangular cover



2 Tiers
1 Rectangular
2 Square
2 Square covers

Tier Display for a Covered Breakfast Service

Tiered display is great for serving breakfast. Hot food will be tiered in top levels and cold in the bottom levels. You can display a breakfast menu with a bento basket or on the serving tray. Served with a cutlery case and/or a condiment server and all dishes will be covered. Best use would be for In-Room Dining as well as for bar finger food.

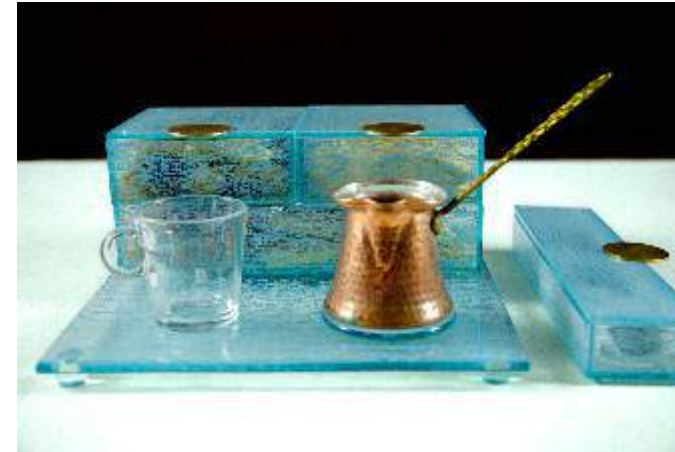
Gray - Healthy



Pure White - Continental



Light Blue - Middle Eastern



Transparent - Nordic



Bento Baskets. A Joy To Use!

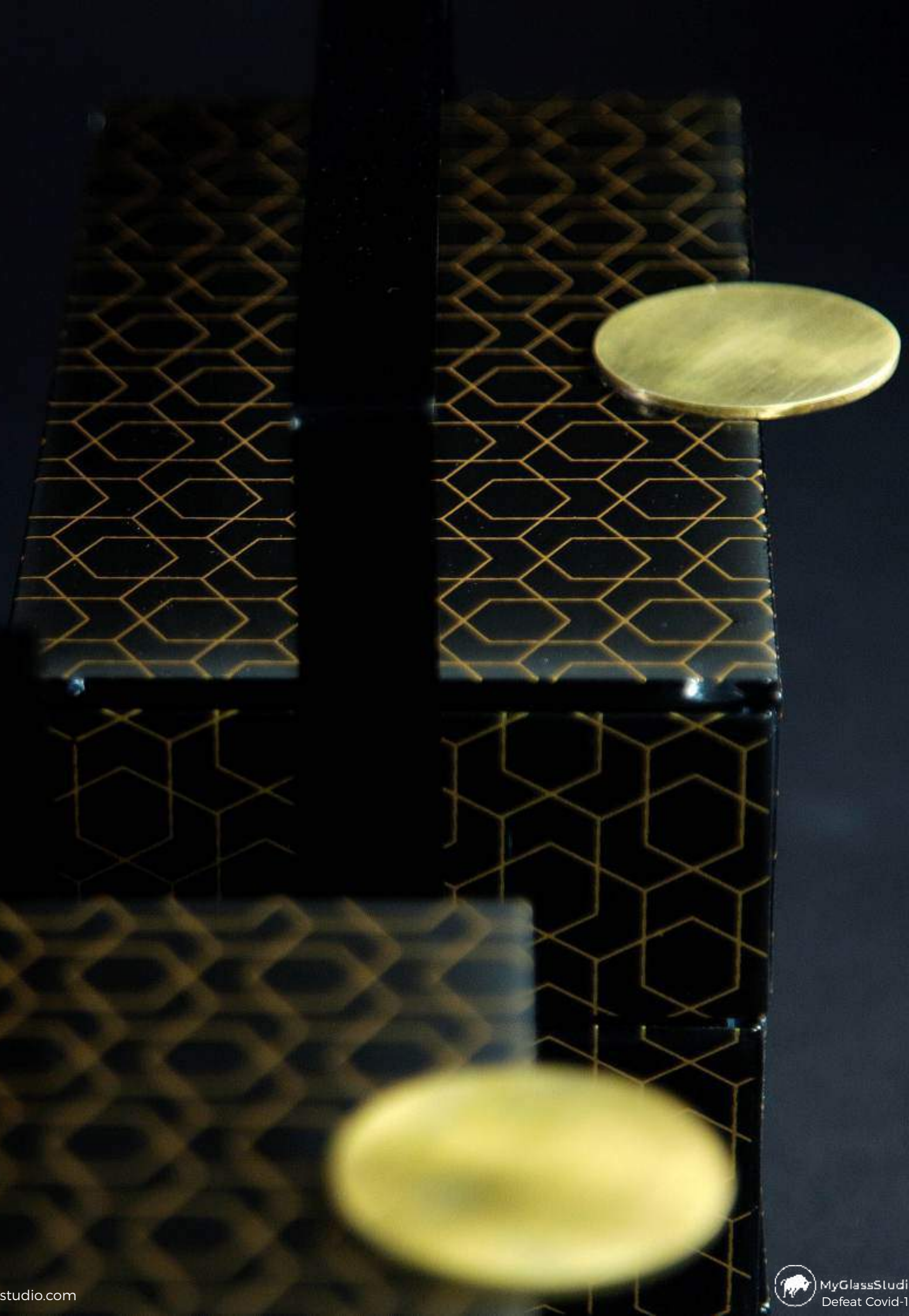
A memorable experience for the guest! A reason to come back.
An environmentally sustainable solution, relevant to the Covid situation but an asset for long term.
A solution for in-room dining, coffee breaks, bar food and more...



Bento Baskets. Contactless & Efficient

“Picnic” type of Bento dinner plate baskets have exceptional advantages in **Safe, Contactless and Efficient meal delivery**, whether you need to deliver a meal to a guest room, a villa, in small events and coffee breaks, buffet, lobby lounge or function room.

- They all fit in a hot box to keep food warm, transported safely with a buggy, a room service trolley, a serving tray or by holding it from the handle.
- There are possibilities to prepare a variety of menus by using the basket in different dinner plate configurations. Can be used in 1, 2 or 3 tiers.
- It is a complete solution since it can incorporate cutlery case, condiment tray, table setting elements such as a napkin ring and personal salt and pepper holders.
- They are light-weight and easy to be carried by guests, who do not wish room service trolleys (which rolled in kitchens, elevators, and basements) to enter their room.
- It allows for cold food (salads, desserts etc) to stay at the bottom tiers of the basket, while hot meals to be placed at the top tiers of the basket.
- Use the basket to serve a complete course in tiers. Mix and match different bento plate colors.
- Metal coating is specified for use outdoors, under harsh weather conditions and withstands salt atmospheric corrosion. Metal baskets come in a variety of colors matching the color of the bento plates.



Bento Dinner Plate Baskets

Large Bento Basket



Large Bento Basket, 28x14cm / 11x5.5in, Height: 20cm / 8in,
Capacity: 4.250ml / 144oz, Weight: 4.4kg / 9.7lbs

The large bento basket is comprised of one large rectangular bento dinner plate, 2 large square plates, 2 long rectangle plates and 2 long rectangular covers. This "picnic" basket is great for food delivery in In-room dining as well as for delivery with buggies in resort villas and fits in hot boxes. Basket holds the large dinner plate where you can have the main course such as steak. In the large square plates you can have the appetizer, salad or dessert or the side dishes of the main course, such as chips and or you can use it as a bread basket. The long rectangle plates can be used: the first as a condiment tray (by adding the square condiment bowls) and the second as the cutlery case (optionally, along with napkin holder, salt and pepper holder and cutlery rest). In this way you have a complete meal delivered to the room. The basket can be placed outside the room on a folding butler tray and work as a "knock and drop" delivery.
Code: SC-18-08



SC-18-08-SS4220370-W



SC-18-08-SS3843-BK



SC-18-08-SS02910450-PE



SC-18-08-RHZ422021-G



SC-18-08-DMZ026021-G



SC-18-08-RHZ43021-BK



SC-18-08-CR422-W



SC-18-08-X40-PE



SC-18-08-CR123-PE



SC-18-08-SR422-W



SC-18-08-SR21-G

Color: SS02910450

Bento Dinner Plate Baskets

Medium Bento Basket



Medium Bento Basket, 22x11cm / 8,6x4,3in, Height: 20,5cm / 8in,
Capacity: 2.835ml / 96oz, Weight: 2,8kg / 6.2lbs

The medium bento basket is made up of 3 tiered small rectangular bento dinner plates and 1 small rectangular cover. A excellent solution for bar food and function rooms, in-room dining, small events and coffee breaks. You can serve main courses (for example pasta), desserts, finger food, appetizers and desserts. Along with the small rectangular dinner plate, you can also tier 2 small square dinner plates if you want to serve small side dishes or a soup.

Code: SC-18-10



SC-18-10-SS4220370-W



SC-18-10-SS3843-BK



SC-18-10-SS02910450-PE



SC-18-10-RHZ422021-G



SC-18-10-DMZ026021-G



SC-18-10-RHZ43021-BK



SC-18-10-CR422-W



SC-18-10-X40-PE



SC-18-10-CR123-PE



SC-18-10-SR422-W



SC-18-10-SR21-G

Color: DMZ026021

Bento Dinner Plate Baskets

Small Square Basket



Small Square Basket, 14x14cm / 5,5x5,5in, Height: 20cm / 8in
Capacity: 2.310ml / 78oz, Weight: 2,3kg / 5.1lbs

The small square bento basket consists of 3 large square bento dinner plates and 1 large square cover. It is the perfect way to serve light, in-room dining lunches or appetizers, as a room amenity "bowl" for cheese, sliced fruit and pastry amenities. It can also be used as a covered high tea stand for the tea lounge, for bar food and finger food in the bar, for appetizers in the restaurant, as well as for small events and meetings as a lunch bag. Code: SC-18-07



SC-18-07-SS4220370-W



SC-18-07-SS3843-BK



SC-18-07-SS02910450-PE



SC-18-07-RHZ422021-G



SC-18-07-DMZ026021-G



SC-18-07-RHZ43021-BK



SC-18-07-CR422-W



SC-18-07-X40-PE



SC-18-07-CR123-PE



SC-18-07-SR422-W



SC-18-07-SR21-G

Color: SR21

A Service Tray with Absolute Versatility

It Will Accommodate any Combination of Bento Dinner Plates

- A Charger Plate or Place Mat for Banquets
- A Room Service Amenity Tray for IRD
- A Canape Serving Tray for Receptions

Small rectangular together with a cutlery case, napkin ring and cutlery rests. Color: RHZ43021.



Bento Dinner Plate Service Tray

The Service Tray will Accommodate any Combination of Bento Dinner Plates

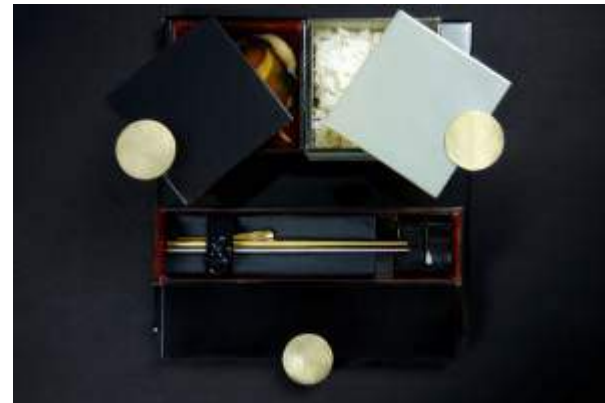
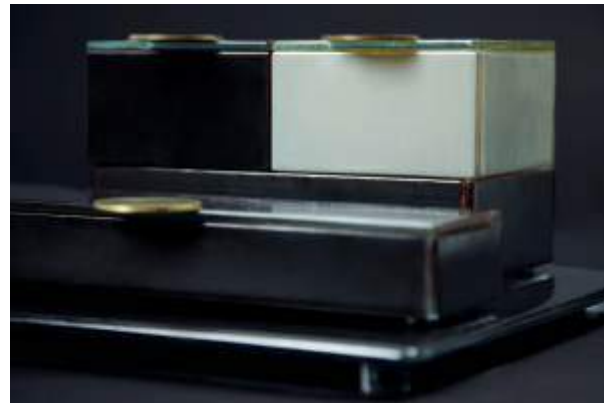
Service Tray / Placemat / Charger Plate

30x30cm / 12x12in, Height: 2cm / 0.8in, Weight: 1.8kg / 4lbs

Code: S1-F3-41

A tray for use in restaurants or banquets on which the dishes can be served one by one on a single tray or charger, thus replacing the placemat. It will be presented with a cutlery case as well as with a dipping bowl set.

The tray grants versatility in the bento dinner plate layout, allowing the use of dinner plates from both the small and the large pair to be combined.



Small rectangular dinner plate together with 2 small square plates and a cutlery case with napkin ring and cutlery rests. Small black square plate serving miso soup and in the gray a portion of rice

Colors: SS3843 (black with inner red) and SS02910450 (gray with inner old gold).



S1-F3-41-RHZ422021



S1-F3-41-RHZ43021



S1-F3-41-DMZ026021



S1-F3-41-SR43



S1-F3-41-CR422



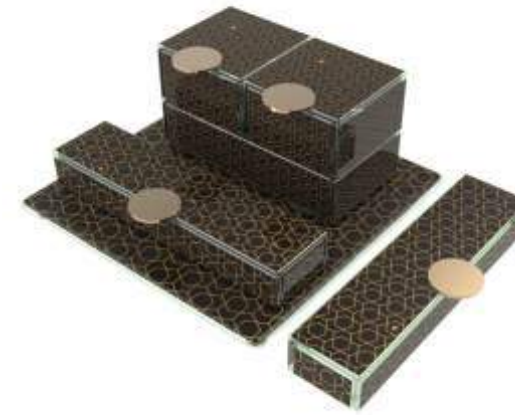
S1-F3-41-CR123



S1-F3-41-SR21



S1-F3-41-X40



One small rectangular together with 2 small square plates and 2 long rectangular plates

Color: RHZ43021 - Art deco black



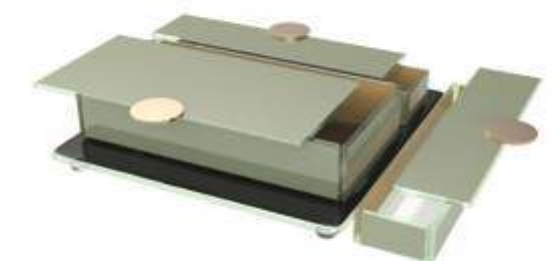
One small square together with 2 long rectangular plates

Color: DMZ026021 - Art deco tobacco brown



One large rectangular together with 2 large square plates and 1 long rectangular plate

Color: RHZ422021 - Art deco white



One large rectangular together with 2 long rectangular plates

Color: SS02910450 - Gray



One large rectangular together with 2 large square plates.

Color: RHZ422021 - Art deco white



Two small square plates together with 2 long rectangular and one large rectangular plate.

Color: SR422 - Pure white

A Service Tray for *In-Room Dining* & *Receptions*

Room Service Amenity Tray

Room service tray to place the multiple bento dinner plates with or without beverages as an amenity tray in the room. It grants more versatility in the bento dinner plate layout, allowing the use of dinner plates from both the small and the large pair to be combined.



Small rectangular together with 2 large square dinner plates and a long rectangle bento dinner plate. Color: RHZ422021.



Black tray together with a large basket. Color: SS02910450

Anti-Slippery Canape Serving Tray

The serving tray can also be used as a canape serving tray when paired together with pre-set canape plates. Guests can remove covers and place them on the tray. Canape plates have anti-slippery food grade silicone bumpers that will not allow the canape pre-sets to slide off. Same is true for the covers.



Tobacco brown tray together with a long rectangular bento dinner plates. Color: DMZ026021

Bar, Drinks & Bar Snacks



Espresso Martini with black and gold long rectangular covered snack tray (SC-17-16-RHZ43021) and black and gold serving tray (S1-F3-41-RHZ43021).

Covered Dinner Plate *Bar Snacks*

Long Rectangular Bento Dinner Plate

28x7cm / 11x2.8in, Height: 4cm / 1.6in, Capacity: 480ml / 16oz

The long rectangular bento dinner plate as well as the small square can be used for both snacks, dips and chips at the bar to accompany drinks and cocktails.

Popcorn and chips can be served in the small square. Condiments, marinated olives, pistachios and peanuts can be served in the condiment bowls inside the long rectangular plate.

Can also be presented together with the serving tray as due to the anti-slippery surface the bento plates will not slide off the tray.



Negroni with gold long rectangular covered snack tray (SC-17-16-SR21), gold condiment square bowls (B5-S4-04-SR21) and black serving tray (S1-F3-41-SR43).



Whiskey with brown long rectangular covered snack tray (SC-17-16-DMZ026021), brown condiment square bowls (B5-S4-04-SR026) and brown serving tray (S1-F3-41-DMZ026021).



Mojito with grey long rectangular covered snack tray (SC-17-16-Ss02910450), black condiment square bowls (B5-S4-04-SR43), square nacho bowl (S5-S6-03-SS02910450) and black serving tray (S1-F3-41-SR43).



Cosmopolitan with pink long rectangular covered snack tray (SC-17-16-SS4220370), white condiment square bowls (B5-S4-04-SR422) and white and gold serving tray (S1-F3-41-RHZ422021).



Mimosa with white and gold long rectangular covered snack tray (SC-17-16-RHZ422021), a gold condiment square bowl (B5-S4-04-SR21) and white and gold serving tray (S1-F3-41-RHZ422021).



Aperol Spritz with white and gold long rectangular covered snack tray (SC-17-16-RHZ422021), black condiment square bowls (B5-S4-04-SR43) and white and gold serving tray (S1-F3-41-RHZ422021).

Covered Cocktail Plates for Receptions & Cocktail Parties

3 Items to Make Receptions Feel Safe Again

- * Covered cocktail plates with canape presets
- * Adjustable wine glass holder
- * Serving tray for canape plates

2 Unique Advantages

- * Safe way to start with receptions
- * Optimized canape storage in the back of the house (fridge and warmer)

Code: SC-17-16-DMZ026021, Long Rectangle Bento Dinner Plate
Code: SC-07-11-BK Wine Glass Holder, Black

The Safe Way to Re-Start Parties

Long Rectangular Bento Dinner Plates with Canape Serving Tray

Plate: 28x7cm / 11x2.8in, Height: 4cm / 1.6in, Capacity: 480ml / 16oz

Tray: 30x30cm / 12x12in, Height: 2cm / 0.8in

Receptions and cocktail parties are hard to envision having a pandemic. Nevertheless, with the covered bento cocktail plate, safety comes first. Presets of canapes are served without the canapes being exposed.

Canape presets however, have one more operational advantage: Handling.

Canapes placed in covered plates can be stored in higher volumes (10 times more) in both the refrigerator, the warmer as well as on a tray. The weight of the tray together with 4 preset canape plates is 4,8kg / 10,6lbs.



Long Rectangular Plate, SC-17-16-X40



Long Rectangular Plate, SC-17-16-DMZ026021



Long Rectangular Plate, SC-17-16-SS02910450



Long Rectangular Plate, SC-17-16-DMZ026021

Wine Glass Holder



SC-07-11-BK
Black



SC-07-11-G
Gold



SC-07-11-W
White



4 Long Rectangular Plates, SC-17-16-DMZ026021
Serving Tray, S1-F3-41-DMZ026021



Stackable & Covered Luxury Lunchboxes

Preset Meals Presented as a Memorable Experience

When Space in Boardroom Buffet Counter is not Enough...
Compact Presentation with Stackable Lunchboxes

Front Of The House

Stack covered bento dinner plates for guests to serve themselves with a lunchbox. Great for boardroom lunches, lunch breaks, small catering events and coffee breaks.

Compared to the open plates, the lunchbox concept saves space on the counter because there is no need to align them on a counter but you can actually stack them one on top of the other.

Due to the food grade silicone bumpers lunchboxes to not slide when they are stacked.

Back Of The House

In the back of the house, you can prepare the meals plated to the last detail and stack them with their covers (with or without cling film) in the refrigerator or the warmer, ready to be served at a later time.



Code SC-17-16-DMZ026021, Long Rectangular Bento Dinner Plate

Code S5-S6-04, Small Rectangular Bento Dinner Plate, Various Colors



Buffet *Bento Dinner Plate Server*

9 & 6 Part Bento Dinner Plate Server

A Covered Solution for Executive Club Lounges & Coffee Breaks

- Tier servers one on top of another
- Place them back to back
- Refill from the back - Retrieve from the front
- Metal frame withstands salt atmospheric corrosion



Code FZ-16-09-CR026-BK, 9-Part Bento Server, Tobacco Brown

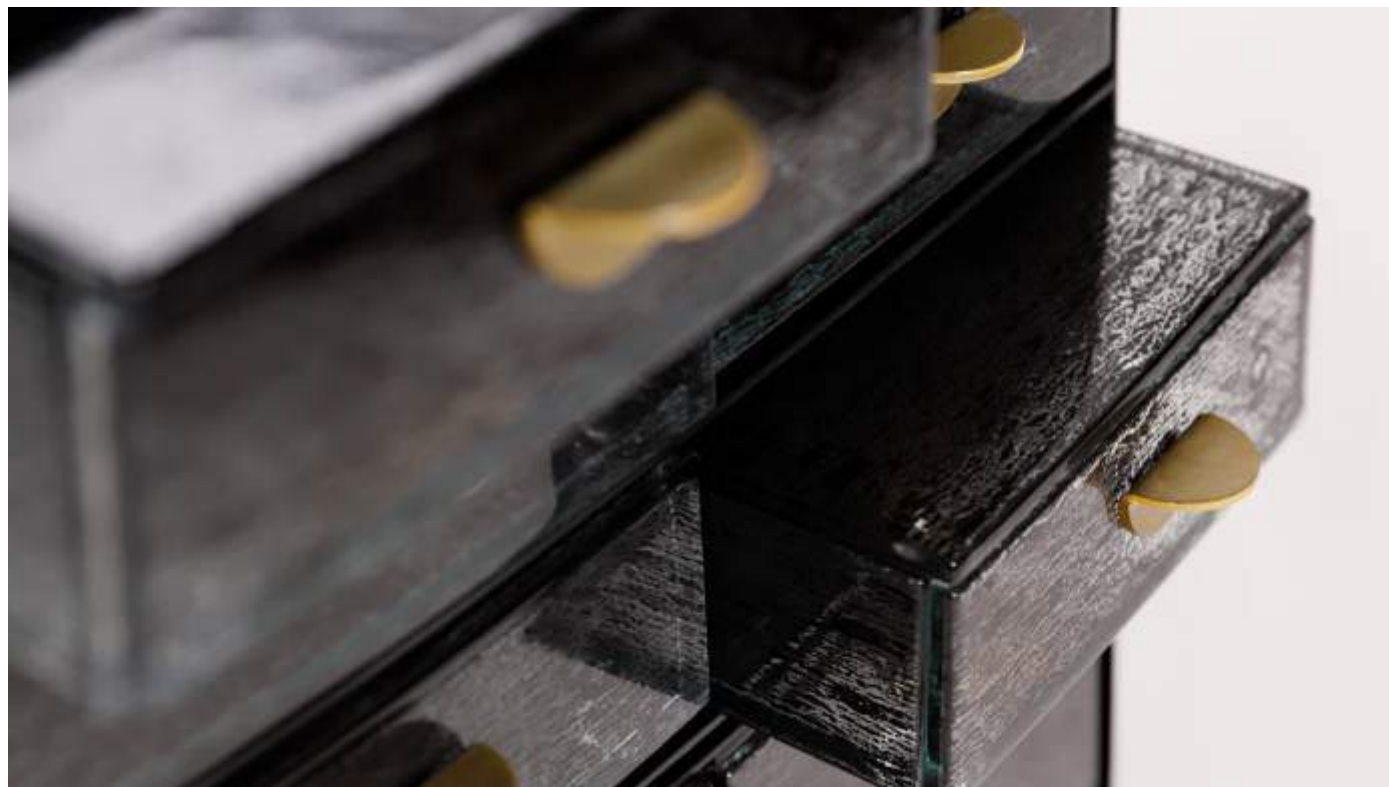
Buffet Bento Dinner Plate Server

9-Part Bento Dinner Plate Server

9-Part Bento Server for Executive Lounges

Dimensions: 43.5x14cm / 17.1x5.5inch, Height: 19.5cm / 7.7inch, Weight: 11.6kg / 25.5lbs, Code: F2-16-09

Buffet bento server with 9 bento lunch box drawers with handles and covers for individual portions for the post-covid world. Two or more bento servers can be stacked one on top of the other. Bento server can be refilled from the back (both sides are open) and guests can retrieve from the front. Bento servers can be placed back to back and guests can retrieve from both sides. A solution for executive lounges, coffee breaks and small events.



F2-16-09-CR43-BK



F2-16-09-CR026-BK



F2-16-09-X40-PE



F2-16-09-CR422-W



F2-16-09-CR0450-PE



F2-16-09-CR021-W

Code F2-16-09-CR422-W, 9-Part Bento Server, White
Code F2-16-09-CR43-BK, 9-Part Bento Server, Black

Buffet Bento Dinner Plate Server

6-Part Bento Dinner Plate Server

6-Part Bento Server for Executive Lounges

Dimensions: 28.6x14cm / 11.3x5.5inch, Height: 19.5cm / 7.7inch, Weight: 7.9kg / 17.4lbs, Code: F2-16-10

Buffet bento server with 6 bento lunch box drawers with handles and covers for individual portions. Two or more bento servers can be stacked one on top of the other. Bento server can be refilled from the back (both sides are open) and guests can retrieve from the front. Bento servers can be placed back to back and guests can retrieve from both sides. A solution for room amenities, executive lounges, coffee breaks and small events.



F2-16-10-CR43-BK



F2-16-10-CR026-BK



F2-16-10-X40-PE



F2-16-10-CR422-W



F2-16-10-CR0450-PE



F2-16-10-CR021-W

Code F2-16-10-CR422-W, 9-Part Bento Server, White

Code F2-16-10-CR43-BK, 9-Part Bento Server, Black

Buffet Bento Dinner Plate Server

3-Part Bento Dinner Plate Server

3-Part Bento Server for Executive Lounges or Afternoon Tea

Dimensions: 14.3x14cm / 5.6x5.5inch, Height: 19.5cm / 7.7inch, Weight: 4.5kg / 10lbs, Code: F2-16-08

The 3-part bento server can be used as an afternoon tea bento box for lounges or even for VIP amenities in hotel to place petit fours, chocolates and fruits. The 3 part high tea box comes with handle to carry and 3 bento lunch box drawers with handles and covers for individual portions.



F2-16-08-CR43-BK



F2-16-08-CR026-BK



F2-16-08-X40-PE



F2-16-08-CR422-W



F2-16-08-CR0450-PE



F2-16-08-CR021-W

Code F2-16-08-CR43-BK, 3-Part Bento Server, Black

Buffet Bento Dinner Plate Server

Food Labels

Buffet Food Labels for Bento Server
Dimensions: 4,5x2,5cm/1.8x0.8inch
Weight: 58gr each/0.1lbs,
Code: F2-01-00-G

Coffee break buffet food labels for the 6- and 9-part bento server. Keep milk, coffee, decaf, tea and sugar in individual portions inside the bento server drawers. They come in a set of 6 (total of 30pcs).

In case special inscriptions are needed, it can also be used with personalized self-adhesive printed food labels (size 4,5x2,5cm) with printed gold background (hex: #AF8941).



Code F2-16-06-CR422-W, 9-Part Bento Server, White
Code F2-16-06-CR026-BK, 9-Part Bento Server, Tobacco Brown

The Testimonials

What do our clients think



*“Glass Studio's ideas are amongst the most original that I have ever commissioned. They **blend inspiration with craftsmanship** in the most unique way...”*

Kristoffer Luczak,
Past: VP F&B, COD, Macau
Executive VP F&B, Wynn Macau, Wynn Palace



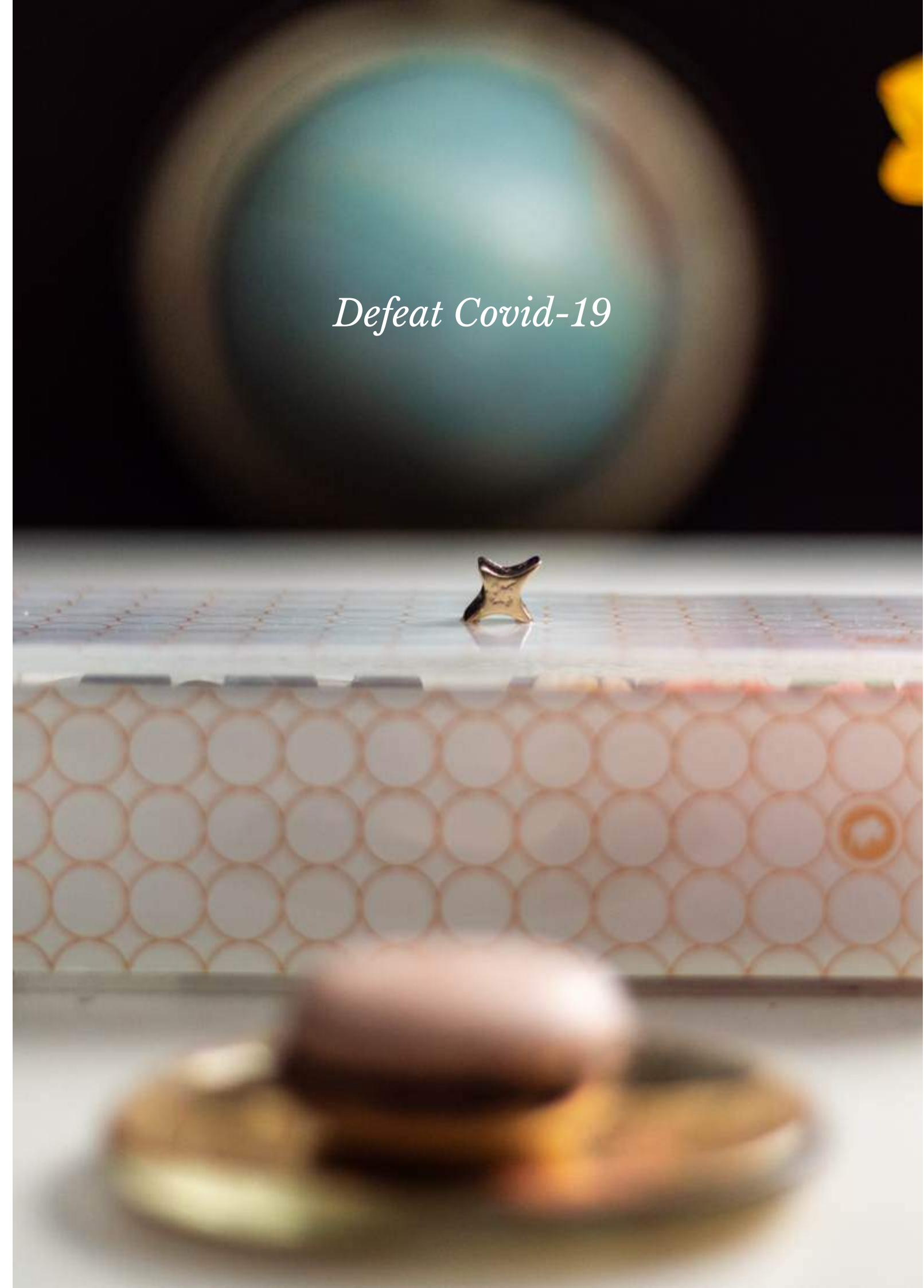
*«Every time I've done custom work with Glass Studio, the guests have been blown away. I love the **quality of their work** and their design flexibility!”*

Sebastien Silvestri
Past: SVP of F&B, SBE Las Vegas
CEO The Dinex Group - Daniel Boulud



*“MyGlassStudio offers creativity and a real flair for design. We have worked with them for many years and they **never fail to deliver a fantastic product.**”*

Mark Askew,
Past: Gordon Ramsay's Group Executive Chef
Director at The Ivy Collection



Defeat Covid-19



...and When Covid-19 is Defeated

Use your Collection
in your
Room Amenity Program

Code: SC-18-07-SR21-G, 3-Tier Square Bento Dinner Basket



MyGlassStudio Client List 2020

AMERICAS **New York** The Plaza, Mandarin Oriental, Ritz Carlton Battery Park, Ritz Carlton Central Park, St. Regis, Aureole, Nobu 57, The Modern, Gordon Ramsay, Grand Hyatt NY, Loews Regency Hotel, The New York Palace, The Quin NY, Rainbow Room at Rockefeller Plaza, Pier a Harbor House. **Las Vegas** The Venetian, Wynn Resort, Bellagio Resort, Mandalay Bay, MGM Grand Hotel & Casino, Charlie Palmer Steak, Wolf Gang Puck, Caesars Palace, Cut, Trump International Hotel & Tower, Il Palazzo, Mandarin Oriental, Vdara Las Vegas, Aria Resort & Casino, The Cosmopolitan of Las Vegas, Westgate Las Vegas Resort & Casino **San Francisco** Four Seasons, Ritz Carlton, St. Regis, Gary Danko, Park Hyatt, Grand Hyatt, Ritz Carlton Half Moon Bay **Los Angeles** Regent Beverly Wilshire, Spago Beverly Hills, CUT, Montage Resort & Spa, Hyatt Huntington Beach, Four Seasons at Beverly Hills, The Beverly Hills Hotel & Bungalows, The US Grant California Four Seasons Westlake Village, The Island Newport Beach, Hyatt Newport Beach, Intercontinental Los Angeles Downtown, Jw Marriott, Loews Hollywood Hotel **Miami** Mandarin Oriental, Intercontinental, The Ritz Carlton Key Biscayne, Hyatt Regency, Barton G., Conrad, Four Seasons, Ritz Carlton South Beach, Ritz Carlton Palm Beach, Breakers Hotel, Setai South Beach, Hard Rock Hotel & Casino Hollywood, Hard Rock Hotel & Casino Tampa, Four Seasons Hotel At The Surf Club, Faena Hotel, Chotto Matte **Orlando** The Ritz Carlton **Orlando** Grande Lakes, Hyatt Regency Grand Cypress, Four Seasons Orlando at Walt Disney World Resort **Scottsdale** Four Seasons Troon North, JW Marriott Desert Ridge, Sanctuary on Camelback **Chicago** Four Seasons, The Ritz Carlton, Everest, Tru, Radisson Blu Aqua, Swissotel, Park Hyatt, Trump International Hotel & Tower Chicago, **Dallas** Charlie Palmer restaurant, Joule **Fort Lauderdale** Ritz Carlton, Atlanta Four Seasons, W **Atlanta**, Ritz Carlton, Mandarin Oriental **Boston** Four Seasons **Houston** The Post Oak Hotel At Uptown Houston **Washington** Four Seasons, The Ritz Carlton (Maestro), St Regis, The Ritz-Carlton Westchester, Shangri-La Hotel Vancouver **Toronto** Four Seasons Toronto, The Ritz Carlton Toronto, Fairmont Pacific Rim Hotel Shangri-La Toronto **Vancouver** The Westin Bayshore, **Mexico** One and Only Mandarin

MIDDLE EAST & AFRICA **Riyadh** Al Faisaliah, Four Seasons, Intercontinental, Marriott, Moevenpick, Kempinski Burj Rafal, Rosewood Durrat, Nobu Hotel, Fairmont, Courtyard, Ritz Carlton, Palace Riyadh, Hilton Granada, Leylaty Jeddah **Makkah** Raffles Clock Tower, Swiss Clock Tower, Conrad, Marriott, Hyatt Regency, Fairmont, Hilton Convention Center **Jeddah** Corniche a Rosewood Hotel, Hilton, Crowne Plaza, Lumiere Restaurant Jeddah, Intercontinental, Bay La Sun, Sofitel, Ritz Carlton, Rocco Forte Assila, Park Hyatt, Centro Rotana **Kuwait** Jumeirah Messilah, Symphony style hotel, Regency Palace, Four Seasons **Doha** Ritz Carlton, Four Seasons, Al Sharq Village and Spa, W Doha, Marriott Marquis, Rotana Oryx, Diplomatic Club, Shangri La Doha, Rotana City Center, The Torch, Hilton, Intercontinental The City, St. Regis Doha, Crowne Plaza The Business Park, Guy Savoy, Souq Waqif Boutique Hotels, AKH-Aspire Hospitality, Westin, Eatopia, Tamarind restaurant, Anantara, Marsa Malaz Hotel Kempinski, Debs W Remman, Sheraton Grand Resort & Convention Hotel, Mandarin Oriental, Alwadi M Gallery, Intercontinental Doha Hotel And Residences, **Bahrain** Ritz Carlton, Gulf Hotel, Moevenpick, Sofitel Zallaq, **Dubai** Burj Al Arab, Emirates Towers, Park Hyatt, Ritz Carlton DIFC, Madinat Jumeirah, Hyatt Regency, Desert Palm Resort, Jebel Ali Golf Resort & Spa, Intercontinental Dubai Festival City, The Fairmont, Grand Hyatt, Atlantis the Palm, The H-Hotel, Sofitel Dubai, The Address Dubai Mall and Address Down Town Hotel, JW Marriott Marquis, Sofitel Palm Jumeirah, Fairmont the Palm, Oberoi-Business Bay, Al Manzil, Vida Hotel, Intercontinental Dubai Marina, Sofitel The Palm Resort & Spa, Sofitel Burj Khalifa, Dubai Marriott Hotel Al Jaddaf, Waldorf Astoria Palm Jumeirah, Four Seasons Jumeirah, Jumeirah Lake Towers, Pullman Lake Towers, Habtoor Grand Resort & Spa, GQ Bar, **Abu Dhabi** Emirates Palace, Shangri-la, Aloft Abu Dhabi, Fairmont Bab Al Bahr, Anantara Qars Al Arab, Crown Plaza Yas Island, St. Regis Saadiyat, Westin, Hilton Capital Grand, Park Hyatt, Ritz Carlton, Dusit Thani, Rosewood Abu Dhabi, Intercontinental, Hyatt at Capital Gate, Courtyard World Trade Center, Southern Sun, St. Regis Nation Towers, **Muscat** The Chedi, Grand Hyatt, Intercontinental, Duqm, Mysk By Shaza Al Mouj, Grand Millennium **Amman** Four Seasons, Grand Hyatt, Marriott Aqaba

ASIA-AUSTRALIA **Singapore** Six Senses Duxton, Sofitel City Centre, Beauford Hotel, Fullerton Hotel, Grand Copthorne, Raffles Hotel, Grand Hyatt, Four Seasons, Sheraton Towers, St. Regis, Aman Resorts, Gallery Hotel, Shangri-la, Mandarin Oriental, Fairmont Singapore, The Ritz-Carlton, Capella Sentosa, Park Royal on Pickering, Marriott Singapore, Marina Bay Sands, The Fullerton Bay Hotel, One Farrer Hotel & Spa **Hong Kong** Cordis Hong Kong At Langham Place, Four Seasons, Disneyland Hotel, Conrad, Intercontinental, Island Shangri-La, Mandarin Oriental, Marco Polo, Kowloon Shangri-la, Langham Place, Watermark, The Ritz Carlton, Peninsula, Pacific Club **Macau** Legend Palace Hotel, Crown Casinos, Grand Lisboa Hotel, St. Regis Cotai Strip, Studio City Morpheus, Wynn, Lisboa Hotel, The Venetian, Galaxy Starwood, MGM Grand, Sofitel, Sands, Four Seasons, Altira, Banyan Tree Resort, Sheraton, Conrad, Starworld Hotel Galaxy, Galaxy, Okura, Ritz-Carlton, JW Marriott Genting Resorts World Genting **Beijing** Four Seasons Beijing, Aman at Summer Palace Beijing, St. Regis Beijing, The Peninsula Palace, Shangri-La, W Beijing Changan Lijiang Pullman Lijiang Resort & Spa **Shanghai** Capella Shanghai Jian Ye Li, Wanda Reign on the Bund, Grand Hyatt, Pudong Shangri-La, Hilton, Peninsula Shanghai, Banyan Tree North Bund Shanghai, Twelve at Hengshan Shanghai - The Luxury Collection, Shangri La JingAn Shanghai, The Langham Xintiandi **Tokyo** Grand Hyatt, Mandarin Oriental, Conrad, Four Seasons, The Prince Park Tower Hotel, Renaissance Tokyo Hotel, L'Osier, Patina restaurant, Aioke restaurant, Hyuri Kamogawa Terrace, Park Hyatt Tokyo, Hyatt Regency Tokyo, Ritz Carlton Tokyo, Shangri-la, The Peninsula Tokyo, Hilton Tokyo, Hilton Tokyo Odaiba, Hilton Tokyo Bay, The Prince Gallery Tokyo Kioicho, Intercontinental Tokyo, Palace Hotel, Tokyo Baycourt Club **Kyoto:** Miyama-so, Takarazuka Hotel, Myako, Ritz Carlton, Take restaurant, Hyatt Regency Kyoto, Suiran Luxury Collection Hotel Kyoto, Hotel Granvia Kyoto, Brighton Hotel, XIV Kyoto Yase Rikyu **Osaka** Ritz Carlton, Westin, Osaka Marriott Miyako Hotel **Korea** JW Marriott Seoul, Hilton Seoul, W Seoul, Conrad Seoul, Jeju Shinhwa World, Lotte Hotel Busan **Vietnam** Capella Hanoi, Heritage Le Meridien Saigon, Intercontinental Hanoi Landmark 72, Sofitel Metropole Hanoi, Sheraton Nha Trang Hotel and Spa Banyan Tree Lang Co Hue, Angsana Lang Ho Hotel, MGM Grnad Ho Tram, Lotte Hotel **Manila** New World Makati City, Hilton Resorts World, Marriott Hotel, Shangri-La At The Fort, Okada, Shangri-La Mactan, Solaire, City of Dreams, Nobu, Sofitel Philippine Plaza Hotel **Indonesia** W Retreat and Spa Bali Seminyak, Banyan Tree Ungasan Bali, St. Regis Bali, Four Seasons Hotel Business District, Sheraton Gandaria, Hotel Mulia Senyan, Fairmont Jakarta **Myanmar** Hotel Kempinski Yangon, Pullman Mandalay Mingalar **Thailand** Anantara Lawana Resorts And Spa, Bangkok The Oriental, The Landmark, St. Regis Bangkok, Shangri La Bangkok **Malaysia** Hilton Kuala Lumpur, The Danna Lankgawi, W Hotel, Banyan Tree Signature Pavilion Kuala Lumpur, Shangri-La's Rasa Ria Resort, Mandarin Oriental Kuala Lumpur **Cambodia** Nagaworld **Taipei** Mandarin Oriental **Mauritius** Royal Palm, The Beachcomber Paradise Hotel and Golf Club, The St. Regis Resort Mauritius, The Grand Mauritian Resort & Spa **Seychelles** Four Seasons, Raffles **Maldives** Kandima Resort, The St. Regis, Maldives Vommuli, Conrad Rangali Island, Sheraton Full Moon, Kurumba Resort Maldives, One & Only, Komandoo Island Resorts and Spa, Taj Exotica Maldives, Kuredu Island Resort & Spa, Four Seasons Resort Maldives At Landaa Giraavaru **India** The Taj Mahal Palace and Towers Mumbai, The Taj Palace Hotel New Delhi, The Westin Gurgaon New Delhi, The Westin Mumbai Garden City, The Westin Pune Koregaon Park, ITC Royal Gardenia Bangalore, Jaypee Vasant, Continental, Sheraton Bangalore, The Leela New Dehli, The Leela Bangalore, The Ritz-Carlton Bangalore, Fairmont Hotel Jaipur, Grand Hyatt Goa, **Sydney** Crown Casino, Hilton, Sheraton On The Park **Melbourne** Crown, Sheraton, Melbourne Racing Club Brisbane W Hotel **New Zealand** OKO Dessert Kitchen Auckland Restaurant, Sofitel Wellington

EUROPE **Paris** Plaza Athenee, The Ritz, Four Seasons George V, Park Hyatt Place Vendome, Hyatt Regency Paris-Madeleine, Le Royal Monceau-A Raffles Hotel, L'Envue, Hotel de la Tremoille, Pullman Tour Eiffel, The Peninsula Paris **London** Dorchester, Carlton Tower, Claridge's, Le Gavroche, Pied a Terre, Gordon Ramsay, Four Seasons Canary Wharf & Four Seasons Park Lane, Ritz London, 45 Park Lane, Intercontinental Park Lane, Grosvenor House, Berkeley Hotel, Rocco Forte Brown's Hotel, The Connaught at Maybourne, Quilon Restaurant & Bar, The Fairmont Savoy, Landmark London, Dukes hotel, Bulgari Hotel London, Four Seasons Trinity, Shangri la Shard, Dakota Deluxe Leeds, Marriott Hotel Park lane, Stallion Ai Services London, Ivy Collection Restaurants, Chotto Matte **Rome** Waldorf Astoria Cavalieri, Rocco Forte Hotel De Russie **Milan** Park Hyatt, Bulgari, Excelsior Gallia **Capri** Capri Palace Hotel Hapimag Resort Cefalu **Amsterdam** Hotel Okura, Intercontinental Amstel, Waldorf Astoria, Hilton, W Hotel, MSC Cruises **Berlin** Kempinski Adlon, Grand Hyatt **Munich** Mandarin Oriental **Frankfurt** Jumeirah **Dusseldorf** Hyatt Regency **Algarve** Conrad **Brussels** Steigenberger, Rocco Forte Hotel Amigo **Barcelona** Hotel Arts Barcelona W Barcelona **Geneva** Beau-Rivage Palace, Four Seasons Des Bergues, Le Richmond **Lausanne** Royal Savoy **Zurich** Park Hyatt, Marriott Zurich, Hotel Atlantis By Giardino **Budapest** Four Seasons, Marriott **Prague** Hilton **Monaco** Societe des Bains de Mer **Cannes** The Grand Hotel Cannes **Dublin** Four Seasons, The Shelbourne, Conrad **Warsaw** Raffles Europejski Hotel **Vienna** Hilton **Moscow** Park Hyatt Ararat, Lotte Hotel, Four Seasons, The Ritz-Carlton, Baltschug Kempinski Hotel St, Hilton St. Petersburg Concord Catering, Four Seasons Lion Palace

EUROPE - MIDDLE EAST

anna@myglasstudio.com

Mob: +359878694588

EUROPE - MIDDLE EAST

nana@myglasstudio.com

Mob: +306944653526

AMERICAS

emanuela@myglasstudio.com

Mob: +359897971676

JAPAN

kami-chan@myglasplate.jp

Office: +81 9030380450

AUSTRALASIA

riccardo@myglasstudio.com

Mob: +359877540548

MIDDLE EAST - AFRICA

jenny@myglasstudio.com

Mob: +306946120893

INDIAN OCEAN - AFRICA

fenia@myglasstudio.com

Mob: +359878754548

SOUTH - EAST ASIA

milita@myglasstudio.com

Mob: +38970273701



MyGlassStudio
Defeat Covid-19

www.the-glass-co.com